

pacplan  AirWave™  
pillow system PW2



Introducing the AirWave™ PW2  
- the latest development in air  
pillow void fill system technology  
from Pacplan®.



CE



**pacplan** **AirWave™** pillow system **PW2**

The PW2 is the latest development resulting from thousands of installed and tested first-generation AirWave machines.

With its uncompromising efficiency, speed and quality the PW2 is the most flexible and user-friendly model in the Pacplan® AirWave™ series.

Made in Germany, the PW2 combines low maintenance with quiet and durable operation.



**Features & Benefits**

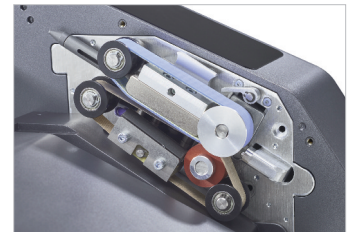
- > Fast air cushion production
- > Programmable memory for five film types
- > Interactive touch-screen display
- > Advanced technology sealing unit
- > Quick start-up in under one minute
- > Low maintenance design
- > Compatible with AirWave 1 accessories

**Specifications**

- > Power supply: 230v 50Hz
- > Power consumption: 115W (20W on standby)
- > Dimensions: 316 x 413 x 232 mm (W x D x H) (extending base increases width to 466 mm)
- > Weight: 6.5 kg
- > Output: up to 22 metres/min
- > Film thickness: 12-30 µm
- > Roll capacity: up to 3000 mtr
- > Noise level: ≤ 60 dB



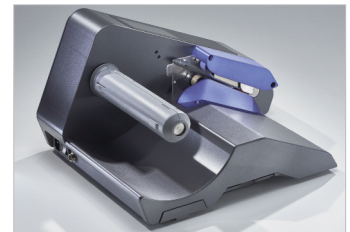
Interactive touch-screen display



Advanced pillow feed mechanism



AirWave quilt compatible



Compact, low maintenance design

**Pacplan® AirWave™ Accessories**



**Overhead hopper**  
FOR POINT-OF-USE BULK STORAGE



**Large roll coiler**  
FOR PRODUCING READY TO USE ROLLS



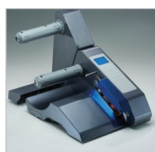
**Rolling container**  
WITH FULL SENSORS



**Roll trough**  
FOR EASY STORAGE



**Docking station**  
FOR DISTRIBUTED USE



**Jumbo roll holder**  
FOR LARGE CAPACITY FILM ROLLS



**Mobile table**  
WITH OR WITHOUT TELESCOPIC LIFT



**Foot pedal**  
FOR HANDS-FREE OPERATION