

S420

HEAVY DUTY IMPULSE HEAT SEALER WITH INTEGRAL CUTTER



A semi-automatic sealing machine that can be used to securely seal filled bags or produce bags from roll material. Suitable for sealing PE, PP and PVC films, or laminated film with a sealable inside layer.





S420

HEAVY DUTY IMPULSE HEAT SEALER WITH INTEGRAL CUTTER

Features include:

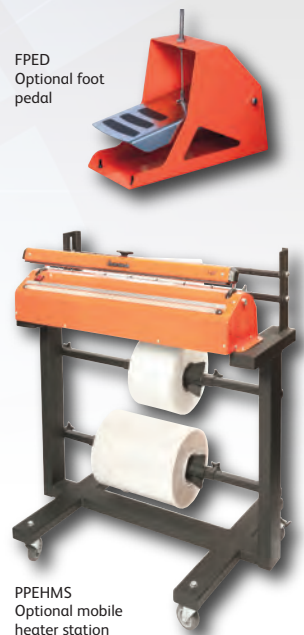
- > Powder coated extruded aluminium sealing bar and pressed steel body
- > Integral sealing wire tensioning unit
- > Gas spring controlled, electromagnetically locking sealing bar
- > Manual or footpedal actuation
- > Welding and cooling time electronically controlled
- > Separately adjustable welding and cooling time
- > Automatic opening of sealing jaws
- > Built-in thread tension welding unit
- > 5mm wide single seal
- > Integral safety cutter
- > Weld length 400mm, cutting width 420mm
- > Usage guide: 200-400 seals per shift

Benefits include:

- > No mechanical switches for optimum reliability
- > Tension unit maintains consistent seal
- > Extruded sealer bar and steel body increase strength and safety



Shown with optional stand, foot pedal and film holder



PPEHMS Optional mobile heater station

FPED Optional foot pedal

Specifications

Welding length (mm):	Max. 400
Welding width (mm):	5
Weld film width (mm):	Max. 400
Cutting length (mm):	Max. 420
Max film thickness (mu):	2 x 250 (PE)
Heat sealable foil:	Max. 400 micron PE - Polyethylene
(Absolute thickness)	Max. 150 micron PP - Polypropylene
	Max. 100 micron PVC Polyvinyl Chloride
	Max. 150 micron BOPP - Biaxially oriented polypropylene
Machine weight (kg):	13.0
Packed machine weight (kg):	14.1
Packed machine size (mm):	650 x 260 x 230

