

S620

HEAVY DUTY IMPULSE HEAT SEALER WITH INTEGRAL CUTTER



A semi-automatic sealing machine that can be used to securely seal filled bags or produce bags from roll material. Suitable for sealing PE, PP and PVC films, or laminated film with a sealable inside layer.





S620

HEAVY DUTY IMPULSE HEAT SEALER WITH INTEGRAL CUTTER

Features include:

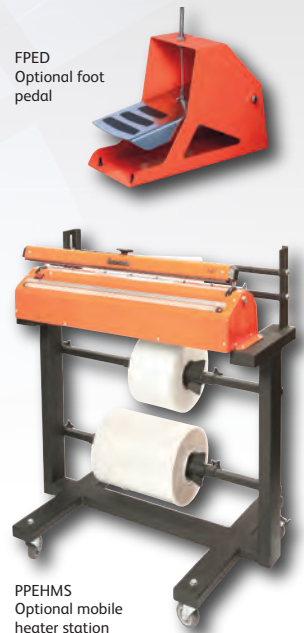
- > Powder coated extruded aluminium sealing bar and pressed steel body
- > Integral sealing wire tensioning unit
- > Gas spring controlled, electromagnetically locking sealing bar
- > Manual or footpedal actuation
- > Welding and cooling time electronically controlled
- > Separately adjustable welding and cooling time
- > Automatic opening of sealing jaws
- > Built-in thread tension welding unit
- > 5mm wide single seal
- > Integral safety cutter
- > Weld length 620mm, cutting width 600mm
- > Usage guide: 200-400 seals per shift

Benefits include:

- > No mechanical switches for optimum reliability
- > Tension unit maintains consistent seal
- > Extruded sealer bar and steel body increase strength and safety



Shown with optional stand, foot pedal and film holder



FPED
Optional foot pedal

PPEHMS
Optional mobile heater station

Specifications

Welding length (mm):	Max. 620
Welding width (mm):	5
Weld film width (mm):	Max. 600
Cutting length (mm):	Max. 600
Max film thickness (mu):	2 x 250 (PE)
Heat sealable foil: (Absolute thickness)	Max. 400 micron PE - Polyethylene Max. 150 micron PP - Polypropylene Max. 100 micron PVC Polyvinyl Chloride Max. 150 micron BOPP - Biaxially oriented polypropylene
Machine weight (kg):	17.0
Packed machine weight (kg):	18.4
Packed machine size (mm):	845 x 295 x 290

