

SP50-10B-A

PNEUMATIC ANVIL STAPLER



Air powered stapler used for fastening of corrugated cartons, vegetable trayboxes, postal tube end caps, pallet boxes, container inserts etc.

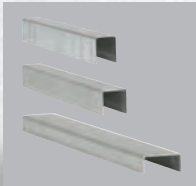
SP50-10B-A

PNEUMATIC ANVIL STAPLER

Provides compression prior to and during entire stapling operation to give a strong, tight closure without damaging the surface of corrugated material. Allows flexibility of staple placement and limits interference of obstacles such as box flanges.

Features:

- Heavy duty steel construction throughout offers reliable performance in industrial packing environments
- Large staple capacity reduces downtime between staple reloading
- 6" x 1" throat
- Air-powered for high-volume usage
- Recommended for use with SHBS9 or SHBS18 box support



Recommended staples:
 SB501912
 SB501938
 SB501958

Specifications

- height: 240mm
- width: 55mm
- length: 370mm
- weight: 3.0kg
- anvil type: standard
- air pressure requirement: 2.5-3.9kg/cm³ (36-55 psi)

Staple Specifications

- staple sizes: SB501938 (9.5mm)
 SB501912 (12mm)
 SB501958 (16mm)
- staple capacity: 110